

III- SEM CIVIL 2019(W)/ (NEW)

TH. 4- ESTIMATION AND COST EVALUATION-I

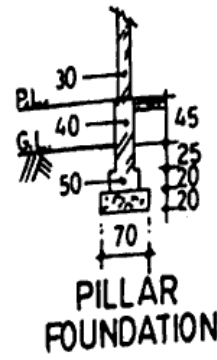
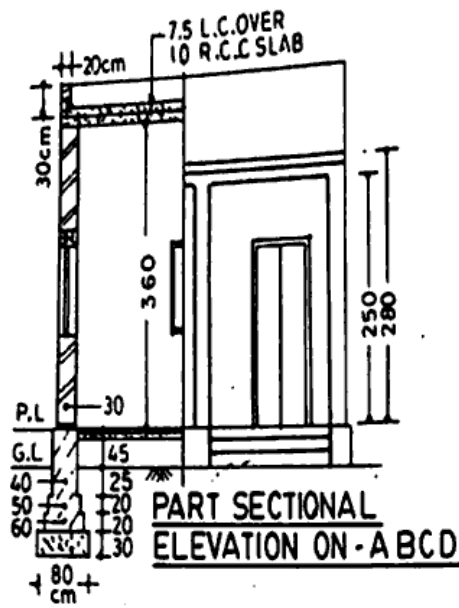
Full Marks: 80

Time: 3 Hours

Answer any FIVE Questions including Q No. 1 & 2

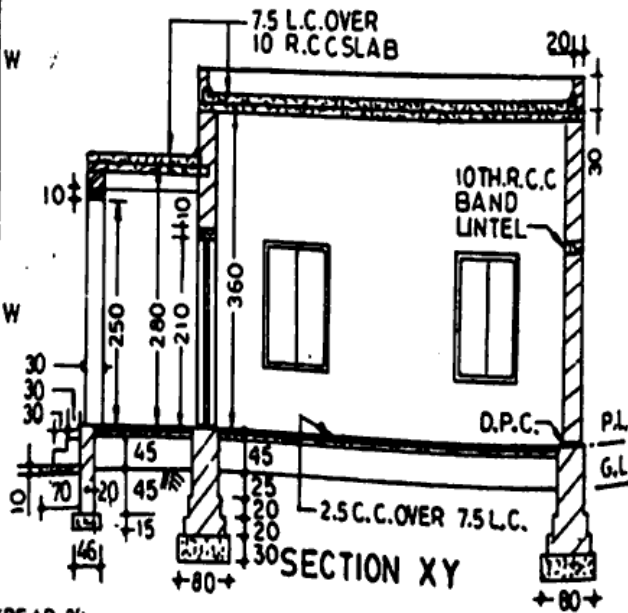
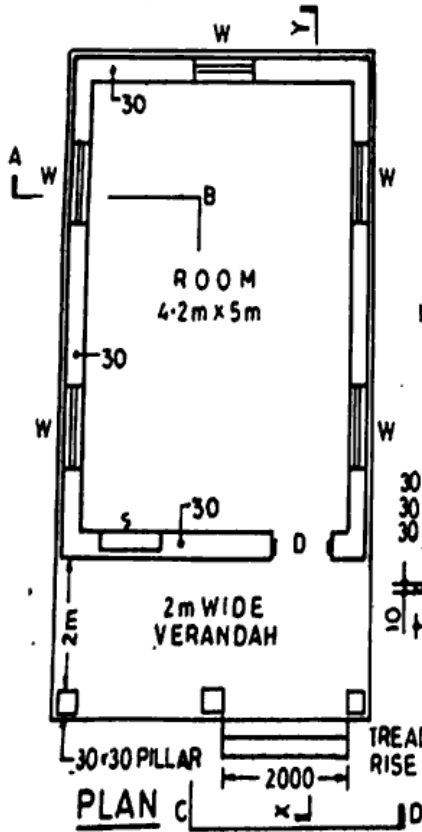
Figures in the right hand margin indicates marks

1	Answer ALL the questions:	2x10
a	Write down volume of a bag of cement.	
b	What do you mean by lead and lift?	
c	Write down the unit of following items: (i) D.P.C (ii) Reinforcement	
d	Define carpet area of a building.	
e	What is the standard weight of a 16 mm diameter bar of 1m length?	
f	Classify labours as per OPWD.	
g	Define salvage value.	
h	What do you mean by sinking fund?	
i	Define Technical Sanction.	
j	Write down size of a farma or batch box.	
2	Answer Any SIX questions:	5X6
a	Write duties and responsibilities of a Junior Engineer.	
b	Calculate dry material for cement plaster (1:6) of 100 m ² area in a building.	
c	Differentiate between Revised estimate and Supplementary estimate.	
d	Analyse the rate of 1Cum of (1:2:4) Cement Concrete with following rate of materials and follow latest wages of labours as per OPWD. Cement-Rs 600 /Quintal Sand – Rs 140/Cum Chips- 1150/Cum	
e	Define: (i) Depreciation (ii) Obsolescence (iii) Scrap Value (iv) Value (v) Cost	
f	Write short note on: (i) wall and Long wall method (ii) Centre line method	
g	What do you mean by analysis of rate? Write down the purposes of rate of analysis.	
3.	Write down short note on roles of the following: (i) Divisional accountant (ii) Sub-Divisional officer	5+5
4	Write briefly on different types of estimates.	10
5	Write down various important items of building with general specifications in sequence while doing estimate of a complete building.	10
6	Prepare the quantity estimate for the following items from the given plan and section of Fig -1 (a) Earthwork in excavation in foundation (b) D.P.C of 2.5 cm thick	7+3
7	Prepare the quantity estimate for the following items from the given plan and section of Fig -1 (a) First class brick work in foundation and Plinth in cement mortar (1:6) (b) RCC work and M.S..reinforcement	5+5



SCHEDULE

DOOR D = 110x210
 WINDOW W = 90x150
 SHELF S = 90x150



DIMENSIONS ARE IN CMS

Figure 1

<http://www.sctevtonline.com>

Whatsapp @ 9300930012

Your old paper & get 10/-

पुराने पेपर्स भेजे और 10 रुपये पायें,

Paytm or Google Pay से

<http://www.sctevtonline.com>