

III/SEM/CIVIL/2015 (W)

(2)

CIVIL ENGINEERING DRAWING

Sub Code-CEP 303

Full Marks : 50

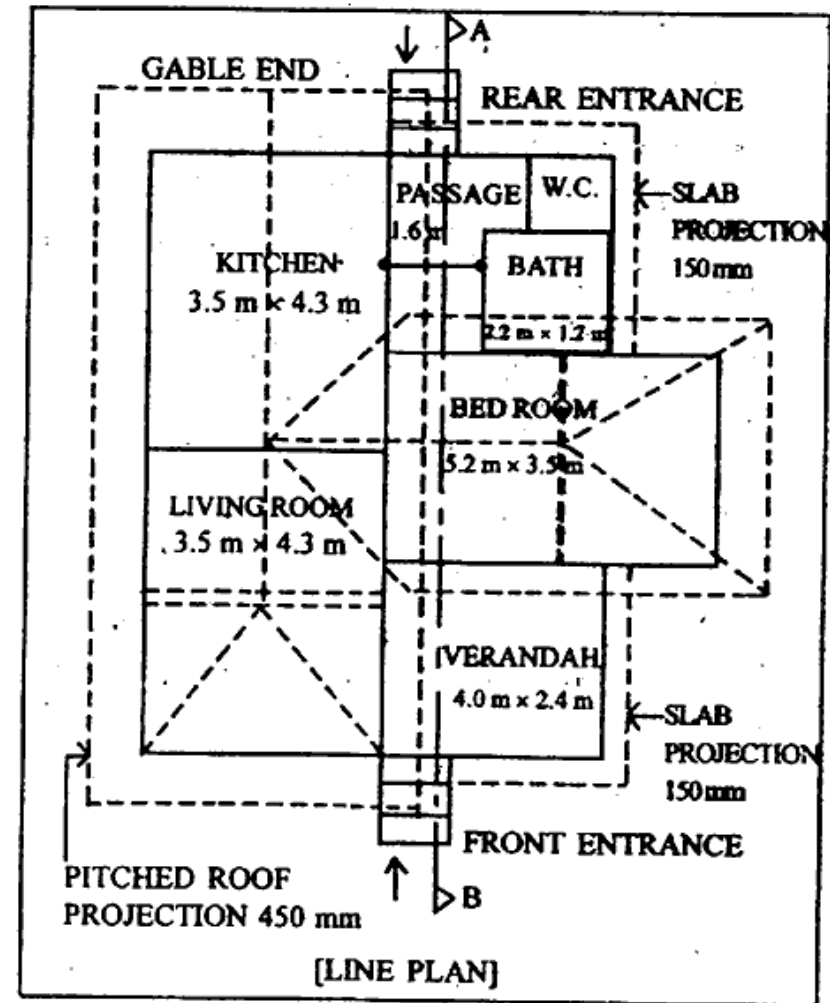
Time ; 2 hours

Answer any three questions including Q. No. 3 & 4

The figures in the right-hand margin indicate marks

1. Draw the front view (elevation) and sectional view (section plan) for a double leaf 2/3 glazed and 1/3 raised pannelled door shutter with frame for a door opening (1200 × 2100), the door frame being 100 × 80. All dimensions are in mm. Assume reasonable data as are necessary. 15
2. Draw a Line plan of a Higher Secondary School Building with specifications and all facilities for a urban area location. 15
3. Draw 2D drawings of the following Building Components : 5
 - (i) Spread Footing
 - (ii) Column Footing.

4. A line plan of a residential building is shown in the figure. Draw the plan at window sill level and sectional elevation along 'AB' with suitable scale. Assume all the necessary data, if required. 30



(Turn Over)