

III/SEM/MECH/AUTO/2015(W)

MECHANICAL ENGINEERING DRAWING

Sub Code-MEP-301

Full Marks : 100

Time : 4 hours

Answer all questions

The figures in the right-hand margin indicate marks

- 1. (a) Draw the elementary welding symbol used in general welding, seam weld, concave fillet weld, fillar weld, single U butt weld, spot weld. 5
- (b) Mention the standard convention of the following material as per SP 46 aluminium, mild steel, glass, wood, bronze. 5
- (c) Neatly draw the profile of the following thread ACME thread. 5
- 2. Draw the top view and sectional front view of a double riveted(Zig-Zag type) lap joint when the diameter of the rivet is 18 mm. Calculate the thickness of plate. 10 + 10 + 5

(Turn Over)

- 3. Draw the full sectional front view, full sectional top view and full sectional side view of the pedestal bearing as shown in figure. (in attached sheet) 25 + 20 + 15



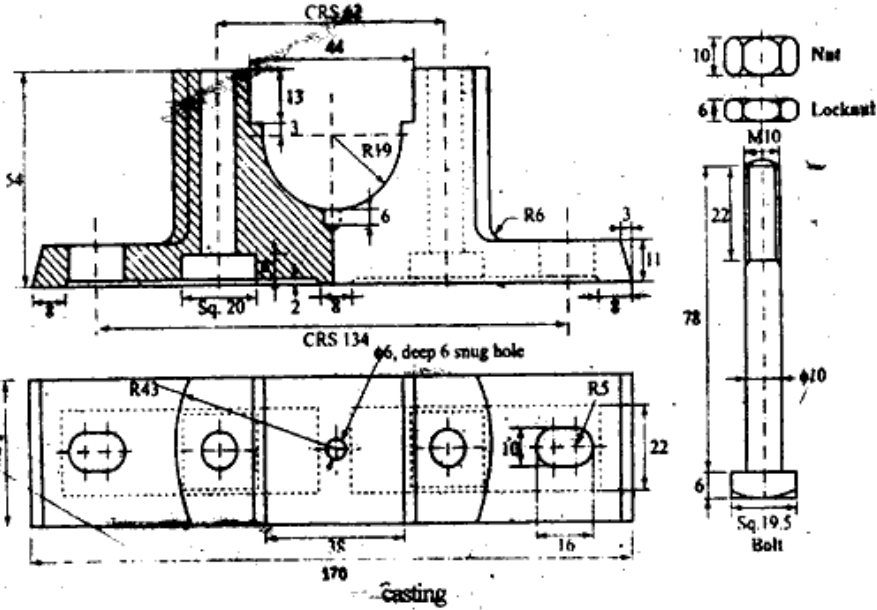
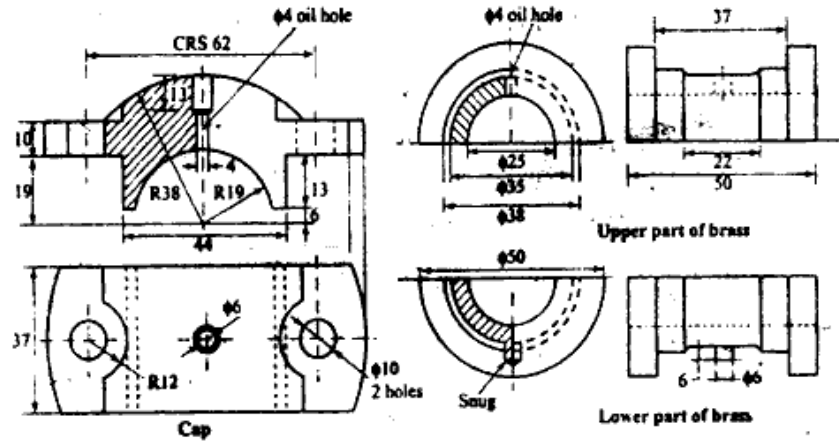
http://www.sctevtonline.com

http://www.sctevtonline.com

http://www.sctevtonline.com

http://www.sctevtonline.com

III/SEM/MECH/AUTO/2015 (W)
Sub Code : MEP-301



http://www.sctevtonline.com

http://www.sctevtonline.com